

GX Series

GXW 18-45

The GXW Series offers generators both for on-grid and off-grid applications. With a simple design and a standard equipment, these generators are the right choice for those customers wanting a professional product easy to use especially for starting operation tasks operations. Available both in open and soundproof version with automatic control panel.



OPEN



Easy oil draining (oil drain cap)



Industrial silencer delivered loose

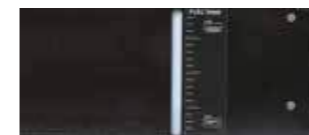


Moving and rotating parts protections against accidental contacts



GXW 18-45

CANOPY



Visual fuel level indicator



Canopy noise attenuation with polyurethane foam



Easy fuel refilling through external cap



GXW 18-25

CANOPY



Single detachable lifting eye



Base frame with integrated feet



R Visual fuel level indicator located in the base frame



GXW 35-45

GXW 18 - 45 DIESEL

GENERATING SET	GXW18W		GXW25W		GXW35W		GXW45W	
	THREE PHASE 400/230V**							
THREE PHASE	kW	kVA	kW	kVA	kW	kVA	kW	kVA
POWER SUPPLY								
STAND BY POWER LTP	18,6	23,2	23,3	29,1	32,0	40,0	41,8	52,2
PRIME POWER PRP	16,9	21,1	21,1	26,4	31,0	38,8	37,8	47,3
POWER SPECIFICATIONS								
VOLTAGE	480 / 277		480 / 277		480 / 277		480 / 277	
FREQUENCY	60		60		60		60	
POWER FACTOR	0,8		0,8		0,8		0,8	
ENGINE								
BRAND	Weichai		Weichai		Weichai		Weichai	
MODEL	WP2.1D21E2		WP2.5D26E2		WP3.9D40E2		WP4.3D45E2	
FUEL	Diesel		Diesel		Diesel		Diesel	
DISPLACEMENT	2088		2540		3860		4330	
SPEED	1800		1800		1800		1800	
CYLINDER	4L		4L		4L		4L	
COOLING SYSTEM	Water		Water		Water		Water	
STARTING SYSTEM	Electric		Electric		Electric		Electric	
ELECTRIC CIRCUIT	12		12		12		12	
ASPIRATION	Natural		Natural		Natural		Natural	
SPEED GOVERNOR	Mechanical		Mechanical		Mechanical		Mechanical	
EMISSION STAGE COMPLIANCE EU	Tier 2		Tier 2		Tier 2		Tier 2	
STAND BY POWER LTP	22,1		27,7		42,7		47,7	
PRIME POWER PRP	20,1		25,1		38,7		43,2	
ALTERNATOR								
TYPE	Brushless		Brushless		Brushless		Brushless	
POLES	4		4		4		4	
VOLTAGE REGULATION SYSTEM	Electronic		Electronic		Electronic		Electronic	
ALTERNATOR PROTECTION	21		21		21		21	
CONSUMPTION								
FUEL CONSUMPTION at 75% of load	4,21		5,26		7,49		9,07	
FUEL CONSUMPTION at 100% of load	5,62		7,02		9,98		12,09	
VERSION								
DIMENSION AND WEIGHT	OPEN		CANOPY		OPEN		CANOPY	
LENGTH	1750	1650	1750	1650	2100	2200	2100	2200
WIDTH	900	1000	900	1000	930	1030	930	1030
HEIGHT	1100	1130	1100	1130	1130	1320	1130	1320
WEIGHT (DRY)	405	510	470	590	690	910	790	1010
FUEL TANK MATERIAL	Plastic		Plastic		Plastic		Plastic	
FUEL TANK CAPACITY	51		51		51		51	
RUNNING TIME at 75% of load	12,00		10,00		7,00		6,00	
CONTROL PANEL AVAILABLE								
AUTOMATIC CONTROL PANEL	ACP		ACP		ACP		ACP	

● = Reference number; for descriptions and options see ELECTRICAL EQUIPMENT page 41 - ** = Other configurations and detailed specifications are available on www.pramac.com - * Open version only for stationary applications

ELECTRICAL EQUIPMENT

GXW SERIES 18-45

CONTROL PANELS Type	ACP 4 Automatic Control Panel	ACP 5 Automatic Control Panel
<p>Control panels with controls, instrumentations and protections to meet multiple applications. Designed for dedicated metallic box assembled and integrated into the generator.</p>  		
OPERATIONAL TYPES		
MANUAL START/STOP	√	√
AUTOMATIC MAIN FAILURE	√	√
AUTOMATIC START/STOP (remote)	√	√
COMMAND		
Operation modes	OFF Manual starting Automatic starting Automatic test	OFF Manual starting Automatic starting Automatic test
Emergency stop button	√	√
Circuit breaker	√	√
INSTRUMENTATIONS		
Type	Digital control unit	Digital control unit
Genset voltage	3 phases sensing	3 phases sensing
Genset current intensity	1 phase sensing	1 phase sensing
Frequency meter	√	√
Hour meter	√	√
Oil pressure	√	√
Engine temperature	√	√
Generating set Power	kVA - kW - kVAr - Cos φ	kVA - kW - kVAr - Cos φ
Battery voltage	√	√
Mains voltage	√	√
Engine speed r.p.m.	√	√
PROTECTIONS		
Low oil pressure	√	√
High engine temperature	√	√
Battery charger failure	√	√
Earth Fault	√	√
Circuit breaker protection	III Poles	III Poles
Under/Over Voltage	√	√
Under/Over Frequency	√	√
Reverse power	√	√
OUTPUT**		
Terminals connection for LTS panel	√	√
Predisposed for remote control RCG	S	S
Predisposed for remote start	√	√
RS232 Communication port	S	S
OPTIONALS **		
RCG - Remote controls	S	S
PHS - Coolant Pre-Heating System	S	S
LTS - Load Transfer Switch	0	0

√ = Standard - 0 = Accessory available - S = Supplement (version available when ordered) - - = Not available - ** = Other configurations and detailed specifications are available on www.pramac.com

OPTIONALS

GXW SERIES 18-45

SUPPLEMENTS AND ACCESSORIES **

PHS - COOLANT PREHEATING SYSTEM

To maintain the engine at a temperature that ensures a quick start when required



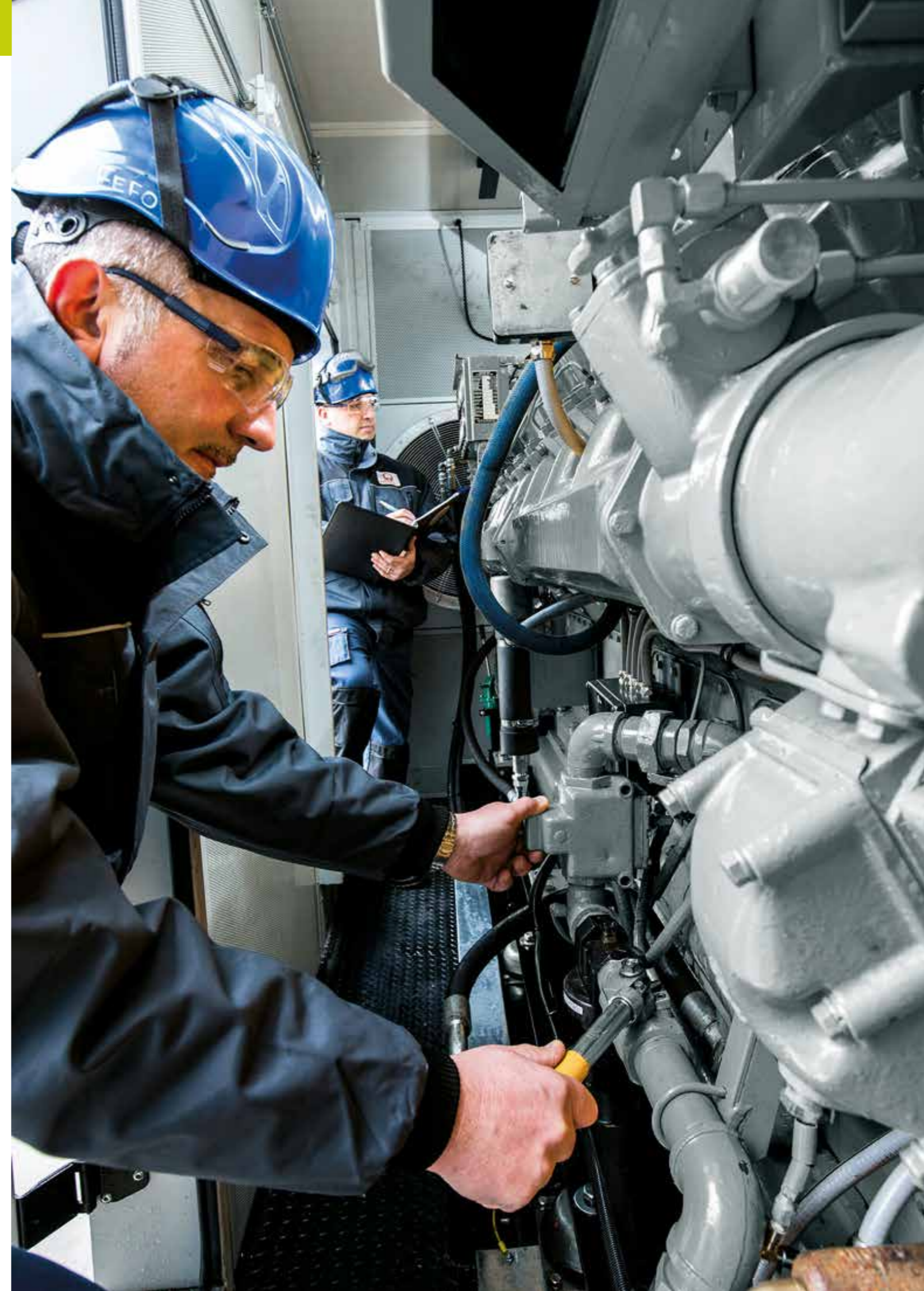
LTS - LOAD TRANSFER SWITCH PANEL

To transfer the load from the mains to the generator and vice versa



RCG - REMOTE CONTROL

Large list of additional modules/devices for remote operation and control of the generating set



**= Other configurations and detailed specifications are available on www.pramac.com